

CURVE	Δ	D	T	L	R
A - A	19° 30' 39"	19 180'	52 26'	103 46'	298 73'
A - B	42° 02' 00"	286 479'	777'	14 83'	20 00'
B - B	262° 44' 00"	143 240'	48 37'	183 47'	40 00'
B - C	40° 34' 57"	286 479'	7 40'	14 17'	20 00'
C - C	107° 06' 31"	16 450'	61 63'	122 39'	346 73'

BKH 130PG086

- NOTES
- 1 ALL CORNERS MARKED WITH IRON PIPES UNLESS SHOWN OTHERWISE
 - 2 ALL CURVE MEASUREMENTS ARE ARC LENGTHS
 - 3 OWNED BY EWING-HUNSVILLE, INC
 - 4 THIS PARCEL IS ABOVE SEA LEVEL
 - 5 ALL CORNER RADII ARE 20 00'
 - 6 TOTAL ACREAGE IS 2.68 ACRES
 - 7 BUILDINGS A AND B HAVE TWO PARKING SPACES (10'x20') BENEATH EACH UNIT
 - 8 BLDG A3 - SIX 2 BEDROOM UNITS - 12 SPACES REQD
 - 9 BLDG B4 - EIGHT 2 BEDROOM UNITS - 16 SPACES REQD
 - 10 BLDG C3 - EIGHT 2 BEDROOM UNITS - 16 SPACES REQD
 - 11 BLDG C6 - TWO 2 BEDROOM UNITS - 4 SPACES REQD
 - 12 BLDG C7 - TWO 2 BEDROOM UNITS - 4 SPACES REQD
 - 13 BLDG C8 - FOUR 2 BEDROOM UNITS - 8 SPACES REQD
 - 14 BLDG C9 - FOUR 2 BEDROOM UNITS - 8 SPACES REQD
 - 15 BLDG C10 - TWO 2 BEDROOM UNITS - 4 SPACES REQD
 - 16 BLDG C11 - TWO 2 BEDROOM UNITS - 4 SPACES REQD
 - 17 BLDG C12 - TWO 2 BEDROOM UNITS - 4 SPACES REQD
 - 18 BLDG C13 - TWO 2 BEDROOM UNITS - 4 SPACES REQD
 - 19 BLDG C14 - TWO 2 BEDROOM UNITS - 4 SPACES REQD
 - 20 BLDG C15 - TWO 2 BEDROOM UNITS - 4 SPACES REQD
 - 21 BLDG C16 - TWO 2 BEDROOM UNITS - 4 SPACES REQD
 - 22 BLDG C17 - TWO 2 BEDROOM UNITS - 4 SPACES REQD
 - 23 BLDG C18 - TWO 2 BEDROOM UNITS - 4 SPACES REQD
 - 24 BLDG C19 - TWO 2 BEDROOM UNITS - 4 SPACES REQD
 - 25 BLDG C20 - TWO 2 BEDROOM UNITS - 4 SPACES REQD
 - 26 BLDG C21 - TWO 2 BEDROOM UNITS - 4 SPACES REQD
 - 27 BLDG C22 - TWO 2 BEDROOM UNITS - 4 SPACES REQD
 - 28 BLDG C23 - TWO 2 BEDROOM UNITS - 4 SPACES REQD
 - 29 BLDG C24 - TWO 2 BEDROOM UNITS - 4 SPACES REQD
 - 30 BLDG C25 - TWO 2 BEDROOM UNITS - 4 SPACES REQD
 - 31 BLDG C26 - TWO 2 BEDROOM UNITS - 4 SPACES REQD
 - 32 BLDG C27 - TWO 2 BEDROOM UNITS - 4 SPACES REQD
 - 33 BLDG C28 - TWO 2 BEDROOM UNITS - 4 SPACES REQD
 - 34 BLDG C29 - TWO 2 BEDROOM UNITS - 4 SPACES REQD
 - 35 BLDG C30 - TWO 2 BEDROOM UNITS - 4 SPACES REQD
 - 36 BLDG C31 - TWO 2 BEDROOM UNITS - 4 SPACES REQD
 - 37 BLDG C32 - TWO 2 BEDROOM UNITS - 4 SPACES REQD
 - 38 BLDG C33 - TWO 2 BEDROOM UNITS - 4 SPACES REQD
 - 39 BLDG C34 - TWO 2 BEDROOM UNITS - 4 SPACES REQD
 - 40 BLDG C35 - TWO 2 BEDROOM UNITS - 4 SPACES REQD
 - 41 BLDG C36 - TWO 2 BEDROOM UNITS - 4 SPACES REQD
 - 42 BLDG C37 - TWO 2 BEDROOM UNITS - 4 SPACES REQD
 - 43 BLDG C38 - TWO 2 BEDROOM UNITS - 4 SPACES REQD
 - 44 BLDG C39 - TWO 2 BEDROOM UNITS - 4 SPACES REQD
 - 45 BLDG C40 - TWO 2 BEDROOM UNITS - 4 SPACES REQD
 - 46 BLDG C41 - TWO 2 BEDROOM UNITS - 4 SPACES REQD
 - 47 BLDG C42 - TWO 2 BEDROOM UNITS - 4 SPACES REQD
 - 48 BLDG C43 - TWO 2 BEDROOM UNITS - 4 SPACES REQD
 - 49 BLDG C44 - TWO 2 BEDROOM UNITS - 4 SPACES REQD
 - 50 BLDG C45 - TWO 2 BEDROOM UNITS - 4 SPACES REQD
 - 51 BLDG C46 - TWO 2 BEDROOM UNITS - 4 SPACES REQD
 - 52 BLDG C47 - TWO 2 BEDROOM UNITS - 4 SPACES REQD
 - 53 BLDG C48 - TWO 2 BEDROOM UNITS - 4 SPACES REQD
 - 54 BLDG C49 - TWO 2 BEDROOM UNITS - 4 SPACES REQD
 - 55 BLDG C50 - TWO 2 BEDROOM UNITS - 4 SPACES REQD
 - 56 BLDG C51 - TWO 2 BEDROOM UNITS - 4 SPACES REQD
 - 57 BLDG C52 - TWO 2 BEDROOM UNITS - 4 SPACES REQD
 - 58 BLDG C53 - TWO 2 BEDROOM UNITS - 4 SPACES REQD
 - 59 BLDG C54 - TWO 2 BEDROOM UNITS - 4 SPACES REQD
 - 60 BLDG C55 - TWO 2 BEDROOM UNITS - 4 SPACES REQD
 - 61 BLDG C56 - TWO 2 BEDROOM UNITS - 4 SPACES REQD
 - 62 BLDG C57 - TWO 2 BEDROOM UNITS - 4 SPACES REQD
 - 63 BLDG C58 - TWO 2 BEDROOM UNITS - 4 SPACES REQD
 - 64 BLDG C59 - TWO 2 BEDROOM UNITS - 4 SPACES REQD
 - 65 BLDG C60 - TWO 2 BEDROOM UNITS - 4 SPACES REQD
 - 66 BLDG C61 - TWO 2 BEDROOM UNITS - 4 SPACES REQD
 - 67 BLDG C62 - TWO 2 BEDROOM UNITS - 4 SPACES REQD
 - 68 BLDG C63 - TWO 2 BEDROOM UNITS - 4 SPACES REQD
 - 69 BLDG C64 - TWO 2 BEDROOM UNITS - 4 SPACES REQD
 - 70 BLDG C65 - TWO 2 BEDROOM UNITS - 4 SPACES REQD
 - 71 BLDG C66 - TWO 2 BEDROOM UNITS - 4 SPACES REQD
 - 72 BLDG C67 - TWO 2 BEDROOM UNITS - 4 SPACES REQD
 - 73 BLDG C68 - TWO 2 BEDROOM UNITS - 4 SPACES REQD
 - 74 BLDG C69 - TWO 2 BEDROOM UNITS - 4 SPACES REQD
 - 75 BLDG C70 - TWO 2 BEDROOM UNITS - 4 SPACES REQD
 - 76 BLDG C71 - TWO 2 BEDROOM UNITS - 4 SPACES REQD
 - 77 BLDG C72 - TWO 2 BEDROOM UNITS - 4 SPACES REQD
 - 78 BLDG C73 - TWO 2 BEDROOM UNITS - 4 SPACES REQD
 - 79 BLDG C74 - TWO 2 BEDROOM UNITS - 4 SPACES REQD
 - 80 BLDG C75 - TWO 2 BEDROOM UNITS - 4 SPACES REQD
 - 81 BLDG C76 - TWO 2 BEDROOM UNITS - 4 SPACES REQD
 - 82 BLDG C77 - TWO 2 BEDROOM UNITS - 4 SPACES REQD
 - 83 BLDG C78 - TWO 2 BEDROOM UNITS - 4 SPACES REQD
 - 84 BLDG C79 - TWO 2 BEDROOM UNITS - 4 SPACES REQD
 - 85 BLDG C80 - TWO 2 BEDROOM UNITS - 4 SPACES REQD
 - 86 BLDG C81 - TWO 2 BEDROOM UNITS - 4 SPACES REQD
 - 87 BLDG C82 - TWO 2 BEDROOM UNITS - 4 SPACES REQD
 - 88 BLDG C83 - TWO 2 BEDROOM UNITS - 4 SPACES REQD
 - 89 BLDG C84 - TWO 2 BEDROOM UNITS - 4 SPACES REQD
 - 90 BLDG C85 - TWO 2 BEDROOM UNITS - 4 SPACES REQD
 - 91 BLDG C86 - TWO 2 BEDROOM UNITS - 4 SPACES REQD
 - 92 BLDG C87 - TWO 2 BEDROOM UNITS - 4 SPACES REQD
 - 93 BLDG C88 - TWO 2 BEDROOM UNITS - 4 SPACES REQD
 - 94 BLDG C89 - TWO 2 BEDROOM UNITS - 4 SPACES REQD
 - 95 BLDG C90 - TWO 2 BEDROOM UNITS - 4 SPACES REQD
 - 96 BLDG C91 - TWO 2 BEDROOM UNITS - 4 SPACES REQD
 - 97 BLDG C92 - TWO 2 BEDROOM UNITS - 4 SPACES REQD
 - 98 BLDG C93 - TWO 2 BEDROOM UNITS - 4 SPACES REQD
 - 99 BLDG C94 - TWO 2 BEDROOM UNITS - 4 SPACES REQD
 - 100 BLDG C95 - TWO 2 BEDROOM UNITS - 4 SPACES REQD
 - 101 BLDG C96 - TWO 2 BEDROOM UNITS - 4 SPACES REQD
 - 102 BLDG C97 - TWO 2 BEDROOM UNITS - 4 SPACES REQD
 - 103 BLDG C98 - TWO 2 BEDROOM UNITS - 4 SPACES REQD
 - 104 BLDG C99 - TWO 2 BEDROOM UNITS - 4 SPACES REQD
 - 105 BLDG C100 - TWO 2 BEDROOM UNITS - 4 SPACES REQD

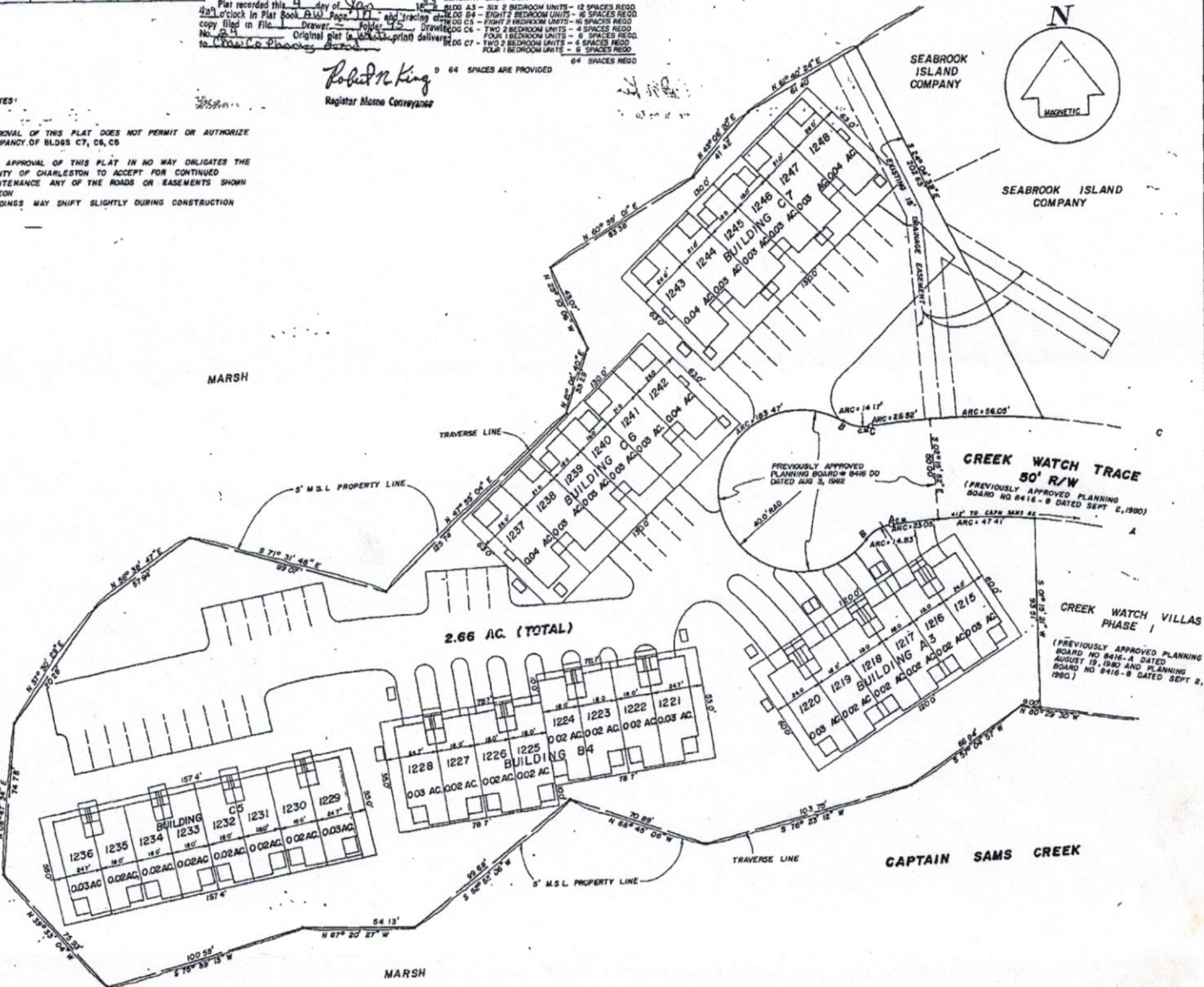
Charleston, South Carolina
Office of Register Mease Conveyance

Plat recorded this 4 day of Jan 1983
at 10:00 clock in Plat Book B-107 Page 171 and tracing
copy filed in File No. 130PG086
Drawn by: [Signature]
Original plat to be delivered to [Signature]
to [Signature]

Robert N. King
Register Mease Conveyance

SPECIAL NOTES

- 1 APPROVAL OF THIS PLAT DOES NOT PERMIT OR AUTHORIZE OCCUPANCY OF BLDGS C7, C8, C9
- 2 THE APPROVAL OF THIS PLAT IN NO WAY OBLIGATES THE COUNTY OF CHARLESTON TO ACCEPT FOR CONTINUED MAINTENANCE ANY OF THE ROADS OR EASEMENTS SHOWN HEREON
- 3 BUILDINGS MAY SHIFT SLIGHTLY DURING CONSTRUCTION



CREEK WATCH TRACE
50' R/W

(PREVIOUSLY APPROVED PLANNING BOARD NO 8416-B DATED SEPT 6, 1980)

CREEK WATCH VILLAS
PHASE I

(PREVIOUSLY APPROVED PLANNING BOARD NO 8416-A DATED AUGUST 18, 1980 AND PLANNING BOARD NO 8416-B DATED SEPT 6, 1980)

NOTE:
ALL STREETS AND EASEMENTS SHOWN ON THIS PLAT ARE PRIVATE AND ARE TO BE MAINTAINED BY SEABROOK ISLAND COMPANY, ITS SUCCESSORS OR ASSIGNS.



CREEK WATCH VILLAS

SEABROOK ISLAND, CHARLESTON COUNTY, S.C.

PHASE II

PLAT OF UNITS 1215 - 1248

SCALE: 1" = 30' DEC 23, 1982

APPROVED PLAT
PREVIOUSLY APPROVED (NO. 8416-D)
[Signature]
DIRECTOR OF PLANNING
CHARLESTON COUNTY PLANNING BOARD
03462 JAN 3, 1983
APL 8

E.M. SEABROOK, JR., INC.
ENGINEERS - SURVEYORS - PLANNERS

SEE NOTE NUMBER 1

I, E.M. SEABROOK, JR., a Registered Surveyor of the State of South Carolina, hereby certify that I have surveyed the property shown hereon, that this plat shows the true dimensions of the property, that all necessary markers have been installed, and the precision is 1/10,000

E.M. Seabrook, Jr.
E.M. SEABROOK, JR.
CIVIL ENGINEER & LAND SURVEYOR
S.C. REG. NO. 1378